

DAY'S MARKET
November 8, 1998

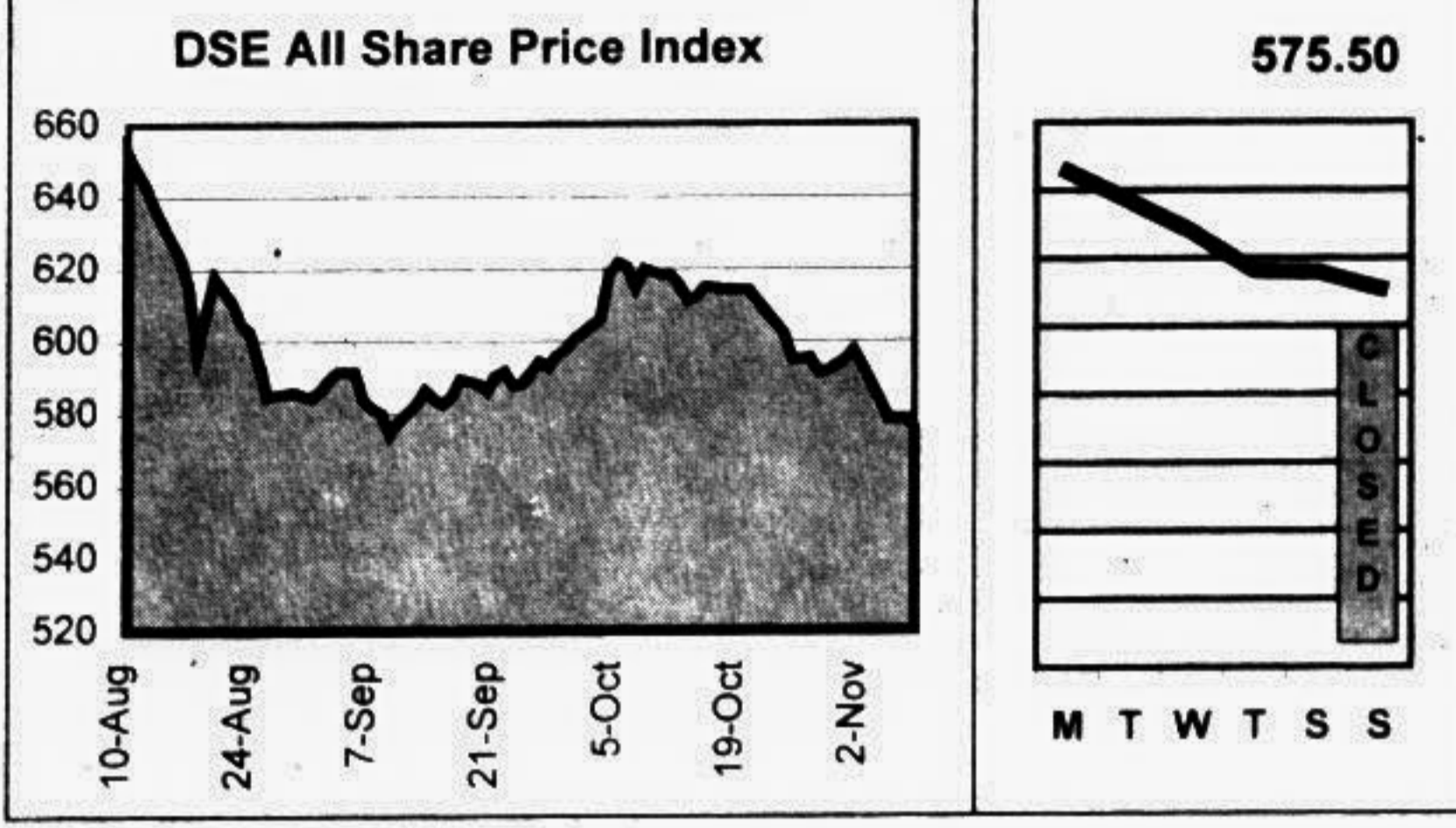
All Share Price Index	575.50	245.23
Change in Index (pts)	(2.40)	0.55
Change in Index (%)	-0.41%	0.23%
Market Capitalisation (cr Tk)	5,230.09	4,347.22
Market Capitalisation (mil US\$)	1,089.60	905.67
Turnover Volume ('000)	27,302	8,642
Turnover Value (cr Tk)	43.91	13.28
No. of Issues Traded	125	27
No. of Issues Gained	30	15
No. of Issues Incurred Loss	84	12
No. of Issues Unchanged	11	1
Price Earning Ratio (x)	8.22	8.17
Dividend Yield (%)	6.90	7.23

Fifty companies have been chosen for calculation of the STAR 50 Index based on their market capitalisation, liquidity, free float and corporate track record. The Base Period for the Index is August 10, 1998. The calculation has been done according to the widely used International Finance Corporation formula.

DAY'S MARKET LEADERS

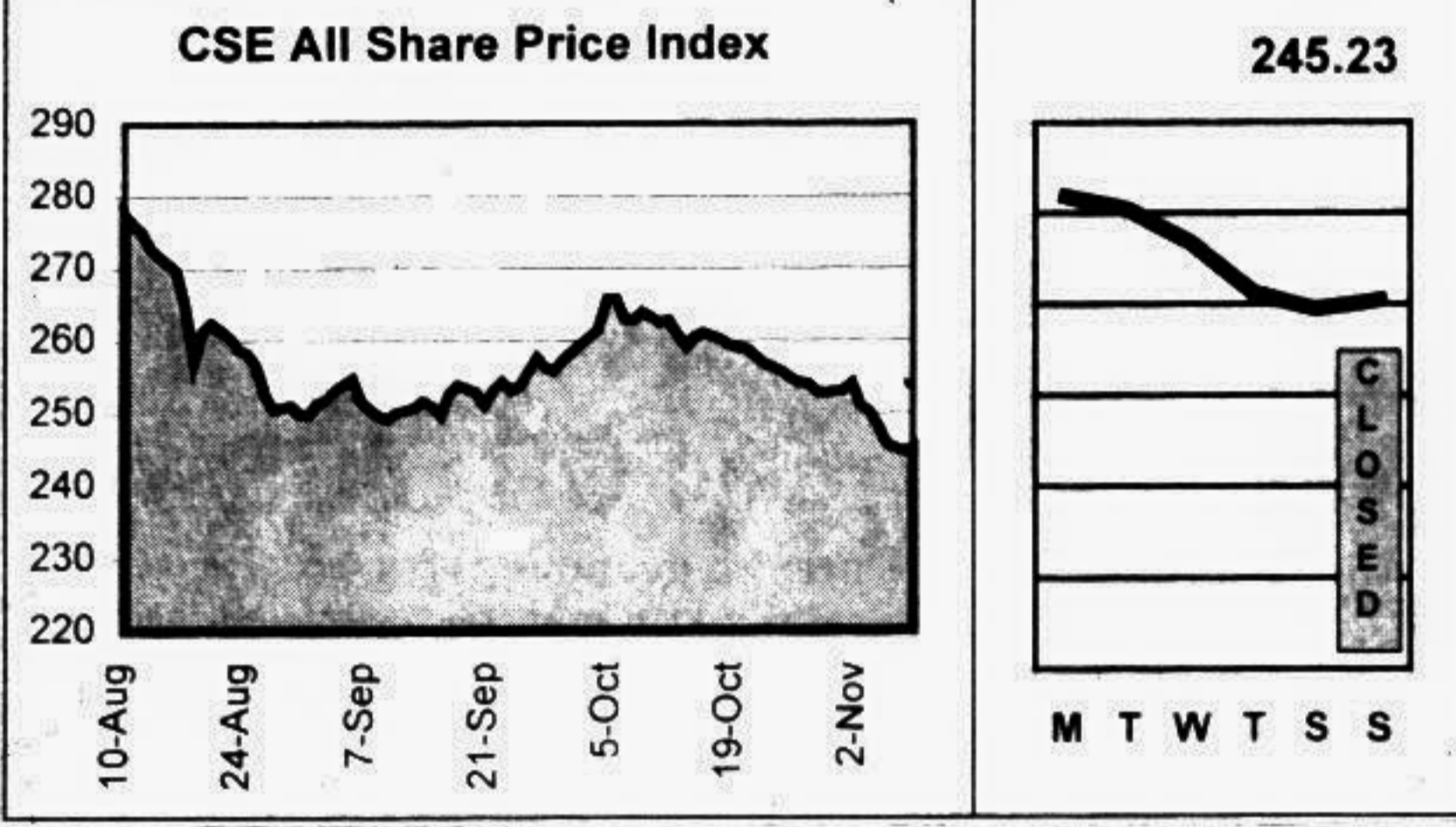
TURNOVER LEADERS

DSE	Vol	Value	CSE	Vol	Value
	'000	Tkm		'000	Tkm
1 Chic Tex	15,712	186.97	1 Chic Tex	5,234	66.47
2 Northern Jute	4,274	117.53	2 Quasem Drycell	1,395	31.54
3 Saleh Carpet	1,860	23.25	3 Eagle Star Tex	1,161	14.86
4 Rupon Oil	1,387	18.03	4 Rose Heaven	1,078	10.66
5 Ashraf Tex	664	13.55	5 Ashraf Tex	264	5.40
6 Quasem Silk	587	13.33	6 ACI	99	3.39
7 Shampur Sugar	740	11.17	7 Beximco Pharma	5	0.29
8 Aramit Ltd.	198	10.69	8 Cig. Cement	0	0.24
9 Rose Heaven	418	9.48	9 Shine Pukur	2.70	0.21
10 Zeal Bangla	655	8.97	10 Apex Tannery	0	0.03



CAPITAL GAINERS

DSE	Vol	Change	CSE	Vol	Change
	'000	%		'000	%
1 Northern Jute	4,273.80	11.79	1 BICB	0.05	15.54
2 Chic Tex	15,711.50	9.17	2 Chic Tex	5,233.50	5.83
3 Pharma Aids	0.03	7.03	3 Confidence Cement	0.02	4.63
4 Pubali Bank	0.01	4.76	4 Cig. Cement	0.43	2.13
5 Dhaka Vegetable	0.15	4.27	5 Bengal Biscuit	0.20	1.84
6 Rasputi Food	18.55	2.21	6 ACI	99.40	1.79
7 Shampur Sugar	739.90	2.03	7 Apex Food	0.01	1.75
8 Saleh Carpet	1,858.60	1.63	8 Shine Pukur	2.70	1.29
9 Rahman Chem	21.25	1.51	9 Apex Tannery	0.14	1.13
10 Beximco Knitting	0.06	1.47	10 Beximco Pharma	5.40	0.94



CAPITAL LOSERS

DSE	Vol	Change	CSE	Vol	Change
	'000	%		'000	%
1 National Oxygen	0.04	(8.57)	1 Mark BD	0.10	(3.35)
2 Renwick Jai	0.40	(8.21)	2 Rose Heaven	478.00	(3.04)
3 Padma Printers	1.50	(7.93)	3 Eagle Star Tex	1,161.00	(3.03)
4 Alpha Tobacco	0.35	(5.35)	4 Dynamic Text	263.50	(2.84)
5 Quasem Tex	32.70	(4.47)	5 Dynamic Text	0.18	(2.24)
6 Samata Leather	0.10	(4.16)	6 BD Dyeing	0.02	(2.09)
7 Apex Footwear	0.08	(4.13)	7 Quasem Drycell	1,395.45	(1.74)
8 Cig. Vegetable	0.05	(3.90)	8 Altex Ind	0.05	(1.21)
9 Libra Pharma	0.12	(3.90)	9 IFIC	0.01	(0.93)
10 Ashraf Tex	664.10	(3.77)	10 Tripti Ind	0.03	(0.93)

LEAGUE TABLE

Company Name	FV/M	Market Performance						AGM				Financial Performance								
		Dhaka Stock Exchange			Chittagong Stock Exchange			Year End	Date	EPS	P/E	DPS	Yield	NAV	Price/NAV					
		Vol	Day's High	Day's Low	Day's Closing	Prev. Closing	Net Chg									Vol	Day's Closing	Prev. Closing	Net Chg	
Banks																				
Al-Arabi	10005	45	990.00	990.00	990.00	990.00	10.00	1,001.00	9803	312.89	3.16	-	-	-	1,318.80	0.75	-	-	-	
Arab Bank	10001	-	-	-	-	-	-	960.00	9612	161097	(1,052.92)	-	-	-	-	-	-	-	-	
Bank of Bangladesh	10005	-	-	-	-	-	-	93.00	9712	12498	24.03	3.87	10.00	10.75	17.92	0.52	-	-	-	
City Bank	10005	-	-	-	-	-	-	220.00	9612	142987	97.09	1.10	-	-	4.20	25.48	-	-	-	
Eastern Bank	10002	-	-	-	-	-	-	110.00	9612	201987	37.10	2.96	-	-	(155.30)	-	-	-	-	
ELC	10020	80	610.00	600.00	602.50	605.00	(2.50)	630.00	9712	2658	59.60	10.11	30.00	4.98	214.74	2.81	-	-	-	
IFC Bank	10005	50	90.00	90.00	90.00	90.00	1.00	107.00	9612	2788	20.29	4.88	-	-	203.96	0.49	-	-	-	
Islami Bank	10001	9	2,150.00	2,125.00	2,130.00	2,146.25	(7.25)	2,025.00	9712	20987	322.18	6.64	21.00	0.98	3,925.20	0.54	-	-	-	
National Bank	10020	-	-	-	-	-	-	68.00	9612	41297	30.08	2.36	-	-	199.98	0.36	-	-	-	
Pubali Bank	10005	5	110.00	110.00	110.00	110.00	5.00	96.00	9612	301297	(198.44)	-	-	-	(134.40)	1.80	-	-	-	
Rupali Bank	10010	-	-	-	-	-	-	70.00	9612	30598	1.36	51.47	-	-	(8.40)	-	-	-	-	
UJCEL	10005	-	-	-	-	-	-	85.00	9612	27897	34.96	2.45	-	-	198.56	0.36	-	-	-	
United Leasing	10005	-	-	-	-	-	-	960.25	9712	27588	61.23	10.53	24.00	2.50	388.91	2.69	-	-	-	
Utara Bank	10005	-	-	-	-	-	-	91.50	9612	18157	3.49	26.22	-	-	296.57	0.83	-	-	-	
Utara Finance	10050	-	-	-	-	-	-	230.00	9712	30698	12.83	17.42	10.00	4.47	106.12	2.11	-	-	-	
Investment																				
1st BPS MF	10050	-	-	-	-	-	-	78.00	-	-	-	-	-	-	74.25	-	-	-	-	
1st ICB MF	10005	10	1,000.00	1,000.00	1,000.00	1,000.00	(33.25)	1,800.00	9806	211098	119.44	8.37	70.00	7.00	359.74	2.78	-	-	-	
2nd ICB MF	10005	-	-	-	-	-	-	425.00	9806	211098	10.49	40.09	3.00	7.13	141.57	2.97	-	-	-	
3rd ICB MF	10005	-	-	-	-	-	-	570.00	9806	211098	18.69	17.68	35.00	10.59	234.79	1.41	-	-	-	
4th ICB MF	10010	-	-	-	-	-	-	732.00	9806	211098	27.81	10.14	32.00	11.35	167.65	1.68	-	-	-	
5th ICB MF	10010	-	-	-	-	-	-	300.00	9806	211098	16.93	11.52	22.00	11.28	134.46	1.45	-	-	-	
6th ICB MF	10010	10	145.00	145.00	145.00	145.00	0.75	160.00	9806	211098	9.39	15.44	18.00	12.41	135.10	1.07	-	-	-	
7th ICB MF	10050	-	-	-	-	-	-	130.25	9806	211098	6.72	18.75	14.00	11.11	119.42	1.06	-	-	-	
8th ICB MF	10050	150	117.00	116.00	116.50	118.75	(2.25)	50	145.00	125.50	19.90	9806	211098	3.35	34.78	12.00	10.30	116.60	1.00	
ICB	1005	-	-	-	-	-	-	175.00	9806	211098	22.36	9.12	7.00	3.33	285.84	0.73	-	-	-	
Engineering																				
Atab Automobile	10005	400	186.00	184.00	184.50	186.25	(1.75)	187.50	9708	281297	7.46	24.73	12.00	6.50	226.22	0.82	-	-	-	
Anwar Galvanizing	10050	150	176.00	176.00	176.00	176.00	-	175.00	9706	30398	2.14	8.21	15.00	8.52	106.44	1.65	-	-	-	
Asia Bangladesh	10050	300	151.20	150.00	150.80	153.70	(2.90)	1,800.00	9706	281297	22.39	6.74	15.00	9.95	99.89	2.52	-	-	-	
Asst. Genl. Mgr.	10005	105	522.00	517.00	519.75	524.75	(5.00)	538.25	9712	30758	13.53	38.41	15.00	2.89	54.42	0.96	-	-	-	
BD Autocar	10005	200	75.00	74.25	74.50	75.75	(1.25)	80.00	9706	301297	11.69	3.87	-	-	138.72	0.57	-	-	-	
BD Lamp	10005	275	745.00	730.00	738.50	742.25	(3.75)	758.00	9712	29598	34.98	21.37	30.00	4.06	241.81	1.03	-	-	-	
BEMCO	10010	-	-	-	-	-	-	92.25	9612	291097	(20.48)	-	-	-	(53.79)	-	-	-	-	
Bengal Steel	10050	-	-	-	-	-	-	1,113.70	9612	27897	(1.40)	-	-	-	2.34	475.54	-	-	-	
Eastern Cables	10005	1,610	129.50	127.00	128.50	128.25	(0.25)	129.25	9706	30398	7.88	16.73	-	-	137.77	0.93	-	-	-	
Karnam Pipe	10050	50	124.00	124.00	124.00	125.00	1.00	125.00	9612	241297	(25.81)	-	-	-	106.73	1.16	-	-	-	
Kay & Qun	10005	600	186.00	182.00	183.00	186.25	(2.75)	218.00	9612	28597	10.59	15.70	12.50	6.81	119.50	1.54	-	-	-	
Monro Corp.	10050	-	-	-	-	-	-	265.00	9506	24498	(562.54)	-	-	-	(317.00)	-	-	-	-	
Monro Jute	10005	-	-	-	-	-	-	1,550.00	9612	31297	15.68	18.18	12.50	4.39	231.00	1.26	-	-	-	
National Tubes	10005	-	-	-	-	-	-	535.75	9706	101297	156.56	90.00	75.00	4.84	628.77	2.43	-	-	-	
Olympic Industries	10005	2,245	184.75	183.25	183.75	185.25	(1.50)	100	9706	211297	19.22	9.56	20.00	10.88	184.61	1.00	-	-	-	
Quasem Drycell	10050	-	-	-	-	-	-	23.60	9706	7597	3.01	7.84	1.50	6.36	33.89	0.70	-	-	-	
Renwick Jai	10005	400	65.00	64.00	64.25	67.00	(5.75)	1,395.450	9706	281297	(17.11)	-	-	-	(5.75)	-	-	-	-	
Saleh Bangladesh	10005	-	-	-	-	-	-	1,790.75	9801	21598	93.37	19.18	80.00	3.35	164.06	10.92	-	-	-	
The Aluminum	10010	-	-	-	-	-	-	380.00	9712	24598	34.24	8.37	10.00	3.51	154.16	1.85	-	-	-	
Woodland Text	10050	13,252	92.50	80.00	80.00	83.00	(3.00)	75.75	9706	241297	(10.17)	-	-	-	(90.23)	0.61	-	-	-	
Food & Allied																				
AB Biscuit	10005	-	-	-	-	-	-	70.00	9506	301295	(26.78)	12.16	5.00	7.06	75.99	0.29	-	-	-	
Alpha Tobacco	10050	350	71.00	70.10	70.80	74.80	(4.00)	-	9706	29398	5.82	12.16	5.00	7.06	75.99	0.53	-	-	-	
Amrit Food	10005	20	475.00	475.00	475.00	475.00	-	-	9706	281297	17.74	26.78	-	-	49.42	24.48	-	-	-	
AMCL (Pvt)	10010	1,900	301.00	295.00	299.50	304.50	(5.00)	310.00	9706	151297	22.28	13.45								