

Libya to expel 30,000 workers to Gaza

Palestinian Authority slates move

GAZA, Sept 3: The Palestinian Authority criticised today what it said was the expulsion by Libyan leader Muammar Gaddafi of 30,000 Palestinian workers to the self-ruled Gaza Strip and Jericho, reports Reuter.

decided to expel about 30,000 Palestinians working in Libya without giving a reason. The Libyan leader urged other Arab states to do the same.

Libyan government the immediate halt to its measures against Palestinians," Abdel-Rahim told Reuters.

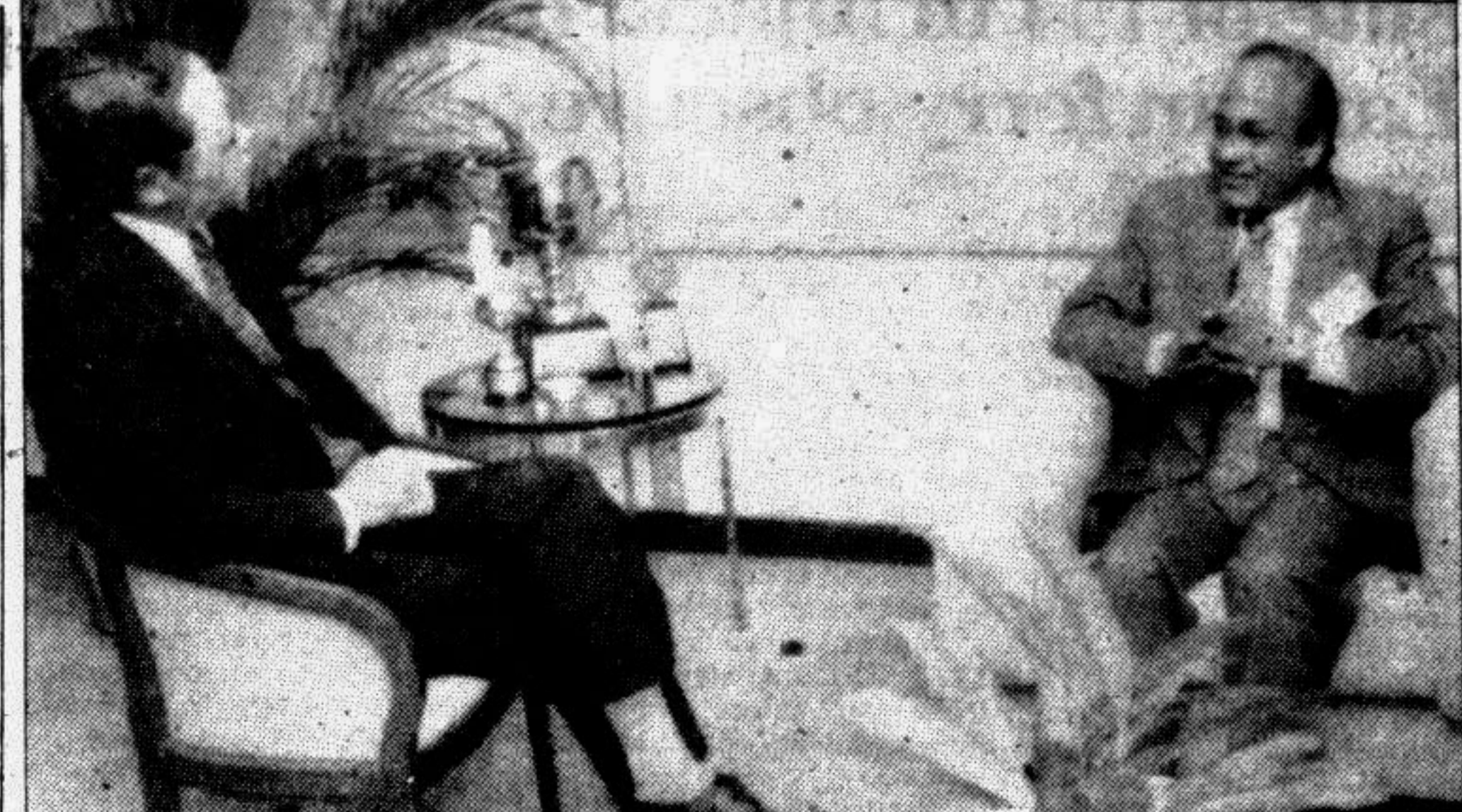
the Libyan economy and affected the government's ability to subsidise food products.

China anxious for Taiwanese investment

BEIJING, Sept 3: China is anxious to lure more Taiwanese investment, despite sharpened political tensions between the two, a senior Chinese official was quoted Sunday as saying, reports AP.

"We condemn only (Taiwan President) Lee Teng-hui, which will not affect trade and economic cooperation" between China and Taiwan, Liu Zhenhao, head of the government's Taiwan Affairs Office, was quoted by the official China Daily as saying.

Lee's visit to the United States in June provoked serious confrontation with Beijing, which regards Taiwan as a renegade province.



Energy and Mineral Resources Minister Dr Khandaker Mosharrar Hossain during his week-long visit to the Philippines called on the ADB President M Sato in Manila on August 30. — PID photo

Shahjalal Group chief to attend Paris leather fair

Chairman of Shahjalal Group Al-Haj Md. Shahjalal Mazumder left Dhaka for Paris on Friday to attend a four-day Paris International Leather Fair '95 which began on September 2, says a press release.

Unemployment rate 3.2 pc in Japan

TOKYO, Aug 29: Japan's unemployment rate remained at a record high 3.2 per cent in July for the second month as the economic stayed at a standstill, the government said Tuesday, says AP.

September — the worst month for stock markets: US expert

NEW YORK, Sept 3: "September is actually the month that stock investors should fear most," says Professor Jeremy Siegel, a finance professor at the University of Pennsylvania's Wharton School of Business, reports AP.

during September, by far the worst of any month. Only three other months have losses, October, February and May.

lated to the approach of winter and the depressing effect of shortening daylight," he said, tongue slightly in cheek.

বিসিআইসি ব্রসিউর ১৯৯৪-৯৫ মুদ্রণের দরপত্র আহবান

বিসিআইসি ব্রসিউর ১৯৯৪-৯৫ মুদ্রণের জন্য দেশের প্রতিষ্ঠিত মুদ্রণ ও প্রকাশনা প্রতিষ্ঠান হতে দরপত্র আহবান করা যাবে। ব্রসিউরের কার্যক্রম মৌলিক বৈশিষ্ট্যবাহী হচ্ছে: (ক) আকার ৮.৫" x ১১" (খ) পৃষ্ঠা সংখ্যা - প্রথমসহ ৪০ পৃষ্ঠা (গ) অত্যন্ত উচ্চ মানের কাগজ - আট পেপার (১২০ গ্রাম) (ঘ) প্রচ্ছদ - সিলিড বোর্ড (২৫০ গ্রাম) এবং উভয় পান লামিনেটেড (ঙ) বইবাই - জুস বাইন্ডিং (চ) ছবির সংখ্যা ২৫ হতে ৩০ টিপগারেসিট প্রিন্টের প্রালমিক বায় সের্বিসেসসহ বহন করতে হবে তবে এর মালিকানা বিসিআইসির থাকবে। (ছ) গ্রাফ/চার্ট ৬ হতে ৮, ব্রসিউর সংখ্যা ১৫০০ (পনেরশত)।

The poorest bear the brunt of 'reform'

Lindsay Mackoon writes from Spain. Despite the government's assurances that Trinidad and Tobago's economy is improving, the World Bank warns the country faces two more difficult years.

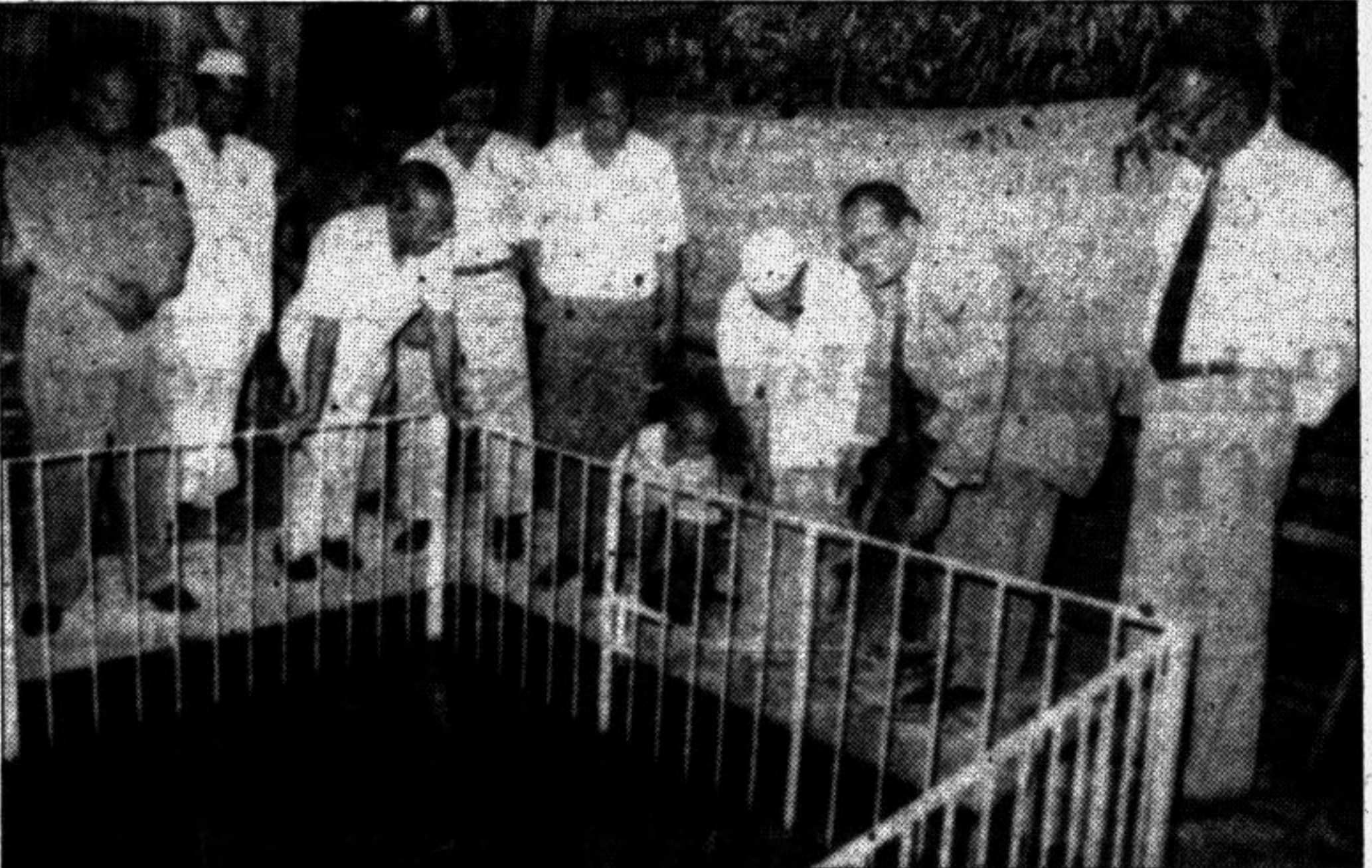
IMF remains concerned about Japan's economic growth

WASHINGTON, Sept 3: The International Monetary Fund (IMF) is moderately optimistic for economic growth in industrialised countries but remains concerned about Japan, according to a draft report, reports AFP.

IMF remains concerned about Japan's economic growth

when it forecast growth of some 3 per cent for this year and 2.7 per cent for 1996.

gent steps, including a cut in interest rates — despite their already record low level — to prevent a recession.



Mustafa Aminur Rashid, Managing Director of Agrani Bank, formally inaugurated Kitchen Fisheries Project 'Shapla' at the bank-financed Savar Bank Town.

Shipping Intelligence

Table with columns: Berth No., Name of Vessels, Cargo, Last Port call, Local agent, Date of Leaving arrival. Includes entries for Feng Zhan, Ocean Envoy, Victoria, etc.

Vessels Due at Outer Anchorage

Table with columns: Name of Vessels, Date of arrival, Last Port call, Local agent, Cargo, Loading port. Includes entries for Banglar Moni, Banglar Asha, etc.

Vessels at Kutubdia

Table with columns: Name of Vessels, Cargo, Last Port call, Local agent, Date of arrival. Includes entries for Shivar, Banglar Shourabh, etc.

Vessels Ready

Table with columns: Name of Vessels, Cargo, Last Port call, Local agent, Date of arrival. Includes entries for Kinabalu Enabelas, Iso Maru, etc.

Vessels Awaiting Instruction

Table with columns: Name of Vessels, Cargo, Last Port call, Local agent, Date of arrival. Includes entries for MIR-1, Yamburenko, etc.

Movement of Vessels for 1/9, 2/9, 3/9 & 4/9/1995

Table with columns: Outgoing, Incoming, Shipping. Includes entries for J/3 Victoria, J/5 Hang Yun, etc.

The above were the shipping position and performance of vessels of Chittagong Port as per berthing sheet of CPA supplied by HRC Group, Dhaka.

Trinidad and Tobago



foreign investments in this sector, including construction of a state-of-the-art 300 million US dollars methanol plant and a one billion dollar project to export liquefied natural gas.