

# Dhaka Day by Day

## Dreams Woven on Kanthas

by Raffat Binte Rashid

Simple tales of rural Bangla, as seen by village women, is what our famous Nakshi Katha is about. These stories of a snake charmer, a new bride, a fisherman or a woman working on a Dheki captured in threads with needles never fail to fascinate us; in fact they always take us to our own world of imagination.

These tales are also very much awe-inspiring to foreigners and whoever has visited Bangladesh has one such wall hanging to tell the tale of our land. But these have their own faults and defects, a person who never visited this part of the globe would never understand the disproportionate figures and shapes depicted in our nakshi, they would never comprehend why so many themes are stitched in one canvas?

To promote these beautiful and very much original stitches, to modernize these traditional skill and add an universal appeal to these folk artworks, Needleart Creations has come up with excellent changes.

Needleart has developed a unique mixed media where a piece of pure silk strengthened by two layers of cotton, is used as the canvas and the picture is painted through millions of fine hand stitches in exuberant colours.

"It is not restricted by the motifs or style of any particular country or region, instead Needleart can be understood and appreciated throughout the world by the virtue of its versatility," says Gule Afruz Mahub, Joint Secretary, Rural Development and Co-operative Division, Ministry of Local Govt and also one of the directors of Needleart Creations.

"Since it concerns working with destitute women, she and her eldest daughter, with the intuition of doing something for them, got an opportunity here.

One day while roaming the art galleries of New York we saw art works made from many different substances, even those of paper pieces. It was my daughter's idea to exploit — rather make good use of — our women's excellent skill in embroidery and add, if possible, a new dimension in art," she relates the story behind this company.

Starting with only six women in a friend's day-care centre garage, Needleart now employs 30 employees and has a place of its own. This was a crazy idea as Mahub talks of the days she started her project. She had no clear idea of what she was trying to do or create. But one thing she was certain about was that mistakes and correction and error would lead her ways.

Her initial creations, which she could not personally supervise for other reasons turned out to be horrible, as she described "Awful colour combination, full of mistakes, these first ones had to be remade again. Luckily during those days I was an OSD at work, and this time I devoted fully to my new project." Thus within the next four

months 20 beautiful pieces were done. But that definitely was not an easy task."

First of all a panel of artists at Needleart studio carefully select an artwork which would be ultimately recreated through hand stitches. The next step is to capture the true essence of the subject in the form of a blueprint which is then skillfully transferred to the silk canvas. The masterful depiction of Needleart depends largely on choosing and blending the appropriate colour and shade of threads.

"Then the actual hand stitching process begins. Millions of minute hand stitches follow one another in various forms, shapes and thickness to bring out an extraordinary dimension. This unique dimension is possible to create only, through the mixed media art of embroidery," Mahub talks about her creations.

Each square inch of Needleart work may contain up to 1000 hand stitches. To recreate the true forms of a picture the entire process is carefully supervised. "To show a fully bloomed flower, or the fierceness in a tiger's eye or a world of music, to recreate the true meaning of a picture, my artists (destitute women are doing the actual stitching) pass through careful inspection," she emphasises her studios superior standards.

One such woman does a single art work to stick to the rhythm of recreation. Each worker is paid Tk 12 daily and shares a percentage on every square foot of her work when it is sold. Such artworks take 10 days to three months to be completed and is sold at Tk 350 up to Tk 18,000 depending on sizes.

"These art pieces are washable and can be kept for generations," Mahub says showing one of her work which she on completion is hand washed and stretched on a wooden frame.

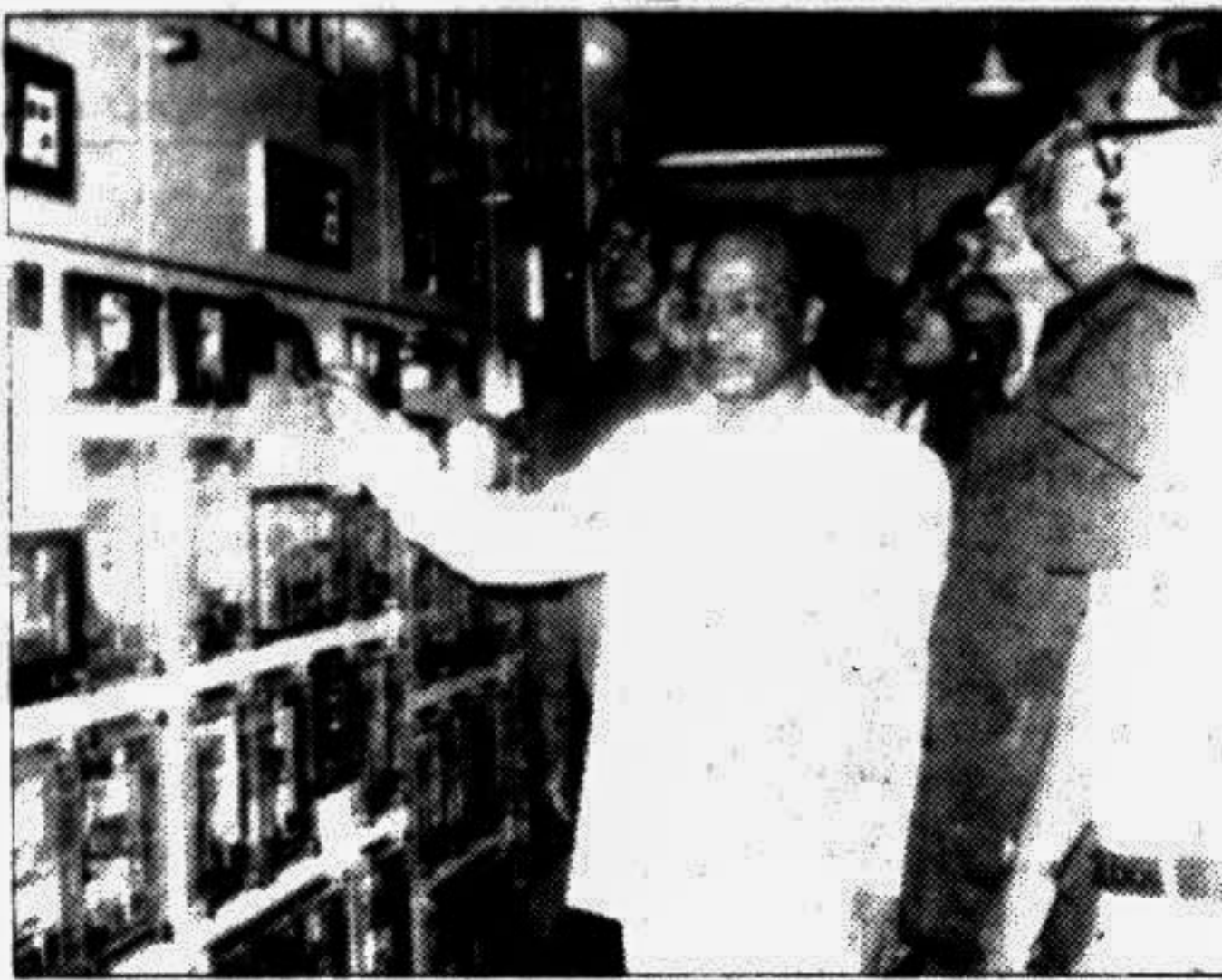
Every girl has latent talent in herself but doesn't know how to put it together, let alone marketing. Mahub has brought many such talented but poor women and opened a source of income for them. "To give these women a marketing outlet I have recently launched ASHA (Afruz's selected handwork assortment) a handicraft shop. This is done not on a large commercial scale but simply to promote many such entrepreneurs and talented women," Mahub relates her plans.

They have made exact replicas of Roman Shah's Survival, Nasiruddin's Nature in Pain, works of Picasso, Asem Ansari, Quayum and many other famous artists.

Needleart Creations held its first exhibition at German Embassy and the second one recently at the French Embassy. Now finally at ASHA, the shop outlet, these unique works of mixed media will be ready in full glory for connoisseurs.



Art takes shape through needle.



Energy and Mineral Resources Minister Dr Khandaker Mosharraf Hossain inaugurated the 132/33 KV grid sub-station at Basundhara in the city yesterday. —PID photo

## New power sub-station commissioned in city

A 132/33 Kilo-Volt (KV) sub-station to maintain uninterrupted power supply in the areas of Banani, Baridhara and Gulshan of the capital was commissioned in the city yesterday, reports BSS.

The grid sub-station, located at Basundhara has been built with the financial assistance of Overseas Development Agency (ODA) and the Asian Development Bank (ADB) at a cost of Tk 27 crore and 64 lakh including a foreign exchange component of Tk 22 crore and seven lakh.

Energy and Mineral Resources Minister Dr Khandaker Mosharraf Hossain inaugurated the sub-station at a simple ceremony.

With the commissioning of the grid sub-station, power supply in Banani model town, Cantonment area, Ibrahimpur DOHS, Baridhara, Joarsahara, Baraid, Kuril, Badda, Shah-

## BCL (S-P) blames JCD for attacking rally

By DU Correspondent

The Bangladesh Awami League-backed Chhatra League (BCL S-P) accused the Jatiyatabadi Chhatra Dal of attacking its rally at the Bangabandhu Sheikh Mujibur Rahman hall of Dhaka University on August 16.

The activists of the Jatiyatabadi Chhatra Dal at the said hall allegedly attacked the BCL rally on the day.

At a rally held in front of Arts Faculty building of the university the speakers alleged, they cannot carry out their hall programmes because these dormitories are now in the grip of the JCD men.

They urged the DU authorities to ensure academic atmosphere in the university. The rally was addressed, among others, by Enamul Hoq Shamim, Bahadur Bapan, Mahbulul Hoq Shakil.

The Jatiyatabadi Chhatra Dal (JCD), the student wing of the ruling BNP, also held a rally in front of the DUCSU building demanding fresh date for the DUCSU polls.

The rally was addressed by Nazimuddin Alam, Muniruzzaman Munir, A B M Mosharraf Hossain and Monir Hossain.

The speakers at the rally

## DUJ rally postponed

The journalists' rally, scheduled today at the National Press Club premises under the auspices of Dhaka Union of Journalists (DUJ) has been deferred following the appointment of the chairman of the fifth wage board for journalists and other employees of the newspaper and news agencies, a DUJ press release said today.

## Modelling

Just think it!  
We not only teach you  
yes, we elevate you into an Ace model  
You are welcome to Canvas Modelling Workshop and Fashion Show.

Trainer

Mou, Noble, Tania, Pallab, Sumi, Faisal

Collect Application Paper

- Studio Padma, New Eskaton, Candyflos, Gulshan-1, Video Connection, Gulshan-2, Vargin Video, Rajlakshmi Complex, Ultra, Ananda Confectionery, Shahinbagh, Film Fare, Sobhanbagh, Yam Yam, Dhanmondi, Patisserie, Elephant Road, Big Bite, Hatirpul, Shuvo Video, New Market, Chittagong And

CANVAS

20 New Eskaton (Opposite: Talking Chinese Restaurant) Moghbazar, Dhaka-1000, Phone: 415266 Please contact before 25 August '95

## Govt. of the People's Republic of Bangladesh

Office of the Executive Engineer  
Tangail PWD Division.

Tender No. 5(1995-96).  
Memo No. 1366

Dated: 9-8-95

## Notice Inviting Tender of PWD (2nd Call)

1. Sealed tenders in Bangladesh Form No. 2911 are hereby invited from the enlisted EM contractor of PWD and also from enlisted contractors of Titas Gas T&D Co. Ltd. (Those have valid 1.1, 1.2 & 1.3 category licence from Titas Gas T&D Co. Ltd.) for the undermentioned work. The tenders will be received by the undersigned and all the Executive Engineers under Mymensingh PWD Circle, Mymensingh up to 12-00 Noon of 30-8-95 and will be opened on the same date at 12-15 PM in presence of the intending tenderers who may like to remain present. Each tender shall be submitted in a sealed cover with the name of work tendered for, name of contractor and address superscribed on it.

Name of work	Estimated Cost	Earnest Money	Time allowed
Providing Titas Gas connection in the different Buildings of Police Line at District Headquarter, Tangail.	Tk. 4,31,546/-	Tk. 8,631/-	60 (sixty) days.

Contract documents consisting of BD Form No. 2911, detailed tender Notice, schedule of items, additional terms and conditions etc. can be seen and purchased from the office of the undersigned and all the Executive Engineers under Mymensingh PWD Circle, Mymensingh on all working days during office hours up to 29-8-95 on cash payment of usual charges of Tk. 400/- per set of contract documents and Tk. 25/- per copy of BD Form No. 2911 (both non-refundable) by the contractor/Firm himself/herselves on his/his representative (in case of representative authorised letter bearing the signature of the representative duly attested by the contractor/firm will require to be produced) showing enlistment, registration book and other documents if required. No tender documents will be sold on the date of opening of tender. Notice inviting tenders, schedule of items, additional terms and conditions etc. duly signed by the tenderers in every page on the space provided will form a part of the agreement and binding upon the tenderers.

Executive Engineer  
Tangail PWD Division  
Tel. No. 4017

DFP-19976-15/8  
G-1230

## '71 days in the frame

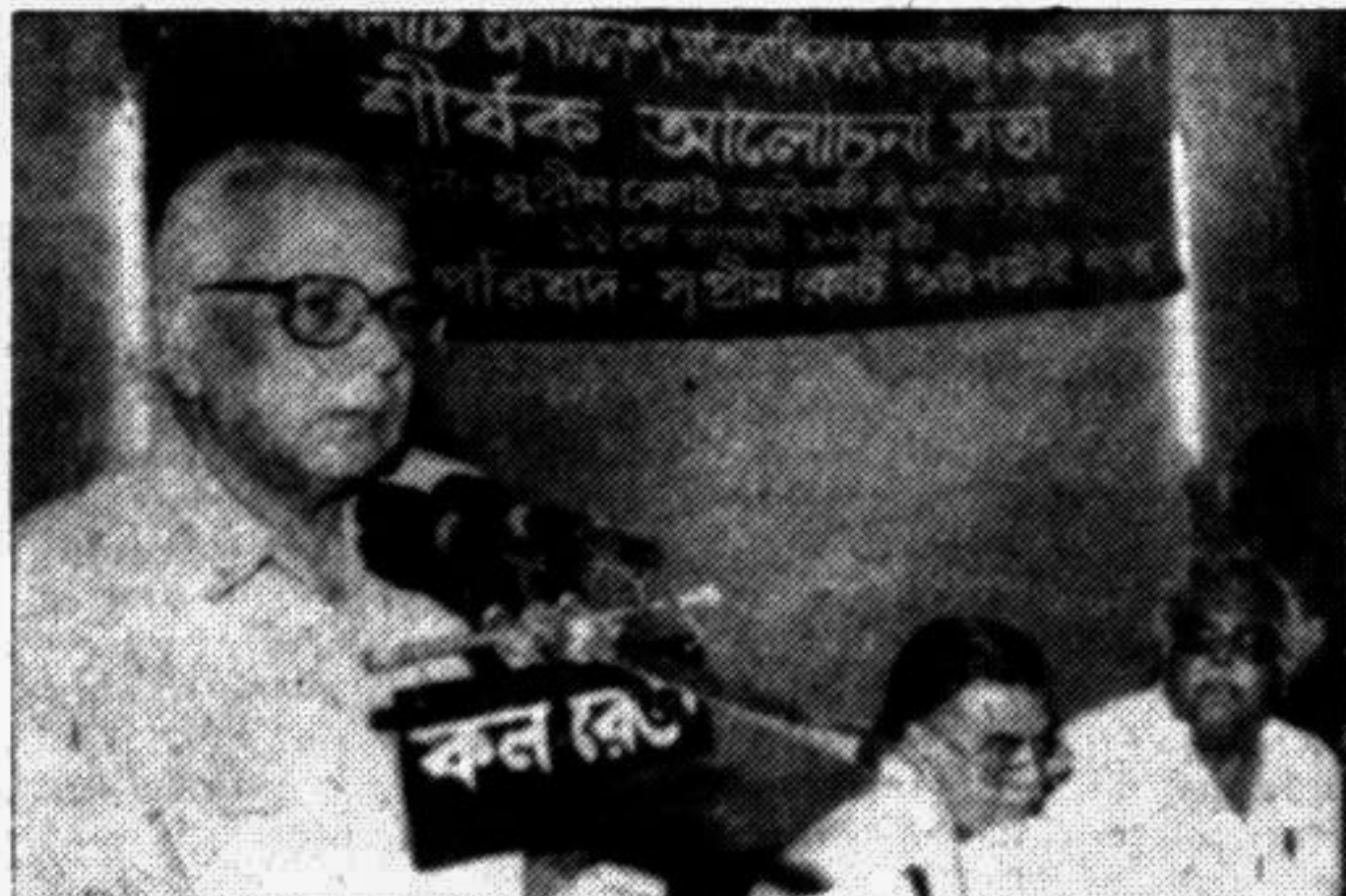
By DU Correspondent

The photographs of the country's Liberation War and other struggles including the Language Movement, drew the attention of a large number of visitors at a photography exhibition at the Teacher and Students Centre of Dhaka University yesterday.

The Bangladesh Chhatra League (S-P), the Dhaka University unit, arranged the three-day exhibition to mark the 20th anniversary of the death of Bangabandhu Sheikh Mujibur Rahman.

The exhibition was inaugurated by Prof Mostafa Chowdhury.

Enamul Hoq Shamim, the president of the BCL central committee, Bahadur Bepari, the DU unit president and Abdul Wadud Khokon, the central vice president, were also present at the inaugural



Barrister Ishtiaq Ahmed speaking at a discussion titled 'Indemnity Ordinance, Human Rights, Bangabandhu and Bangladesh' organised by the Bangabandhu Parishad, Supreme Court Lawyers unit at the SC Bar premises in the city yesterday. — Star photo

## Death anniversary of Tarkabagish today

Various socio-cultural and political organisations have taken up programmes, marking the 19th death anniversary of renowned leader Maolana Abdur Rashid Tarkabagish today, reports UNB.

The day's programme covers special prayers at his mazar and placing of wreaths, destitute-feeding, milad mahfil and discussions.

Besides, Maolana Tarkabagish Sangsad, Maolana Tarkabagish Parishad, Tarkabagish Academy, Gana Azadi League, Jatiya Janata Party, Nurun Naher Tarkabagish College have taken up a week-long programme.

## 'Make Biman profitable'

State Minister for Civil Aviation and Tourism Abdul Mannan yesterday called upon all to make the Biman Bangladesh Airlines a more profit concern, reports BSS.

He was speaking as chief guest at the installation ceremony '95 of the employees union of Bangladesh Biman at Zia International Airport.

The meeting was also addressed by acting managing director of Biman M Mahamudur Rahman, employees union president Mohammad Motahar Hossain, general secretary Mohammad Solaiman and other CBA leaders.

## Weather

## Shower over vast areas likely

Many places of Dhaka, Chittagong, Sylhet and Barisal divisions may receive moderate rain or thundershower accompanied by temporary seasonal gusty wind during the 12 hours till 6 pm today, reports UNB.

Met Office says light to moderate rain or thundershower may occur at a few places over Khulna and Rajshahi divisions during the period.

Moreover, it forecasts, moderately heavy falls are likely to occur at one or two places over Chittagong and Sylhet divisions and the regions of Mymensingh and Tangail.

No appreciable change in day temperature is expected over the country during the period.

Senior Gold Senior Gold Senior Gold

শ্রীমতীঃ মান্না দে

২৪ ও ২৫শে আগস্ট  
সন্ধ্যা ৭-৩০ মিঃ  
হোটেল সোনার গাঁ

চিকিৎসা পাতলা মাছঃ  
ভিডিও কামেকেশন - গুলশান  
ফোনঃ ৬০৭৭৭৭, ৬০৬১৬১, ৬০২৫২৫

কিং টুকি, গুলশান  
ফোনঃ ৬০১০২৪, ৬০১৬৮৭  
কনক, ল্যাভমার্ক সেন্টার, গুলশান  
ফিল্ম ফেয়ার, লাবাঙ্গা - ধানমন্ডি

সোনার গাঁ হোটেল লবি  
চিকিৎসা মূল্যঃ  
২৫০০.০০ ও ২০০০.০০ টাকা

আয়োজনেঃ সংস্কৃতি কেন্দ্র, ঢাকা  
২৫% লভ্য অংশ প্রদানমণীর গ্রাহক তহবিলে প্রদান করা হবে।

সৌজন্যেঃ আলফা টোব্যাকো ম্যানুঃ কোঃ লিঃ

Senior Gold Senior Gold Senior Gold

COMPAQ  
COMPAQ PROLINEA PCs —  
THE RIGHT SET OF FEATURES AT AFFORDABLE PRICES.

ProLinea Slimline desktop: 3 slots/3 bays  
ProLinea Standard desktop: 4 slots/4 bays  
ProLinea Minitower: 5 slots/5 bays

ProLinea specifications<sup>1</sup>

Processor	Memory	Model	PCI Graphics
486 DX2/50	4 MB RAM, 8 MB RAM	M1 or M270	Integrated PCI Local Bus Graphics Controller
486 DX2/60	8 MB RAM	M1, M270 or M420	Integrated PCI Local Bus Graphics Controller
486 DX4/50	8 MB RAM, 128 KB Cache	M420	Integrated PCI Local Bus Graphics Controller
586 75	8 MB RAM, 256 KB Cache	M270 or M420	Integrated PCI Local Bus Graphics Controller
Standard Desktop: 4 expansion slots x 4 drive bays			
486 DX2/50	8 MB RAM	M270 or M420	Integrated PCI Local Bus Graphics Controller
486 DX4/50	8 MB RAM, 128 KB Cache	M420	Integrated PCI Local Bus Graphics Controller
586 75	8 MB RAM, 256 KB Cache	M420 or M720	Integrated PCI Local Bus Graphics Controller
586 90	8 MB RAM, 256 KB Cache	M420	Integrated PCI Local Bus Graphics Controller
	16 MB RAM, 256 KB Cache	M720	Integrated PCI Local Bus Graphics Controller
	16 MB RAM, 256 KB Cache	M720	Onboard 2000 Graphics Controller
Minitower: 5 expansion slots x 5 drive bays			
486 DX2/50	8 MB RAM	M420	Integrated PCI Local Bus Graphics Controller
486 DX4/50	8 MB RAM, 128 KB Cache	M420	Integrated PCI Local Bus Graphics Controller
586 75	8 MB RAM, 256 KB Cache	M420	Integrated PCI Local Bus Graphics Controller
	16 MB RAM, 256 KB Cache	M720	Onboard 2000 Graphics Controller
586 90	8 MB RAM, 256 KB Cache	M420	Integrated PCI Local Bus Graphics Controller
	16 MB RAM, 256 KB Cache	M720	Integrated PCI Local Bus Graphics Controller
	16 MB RAM, 256 KB Cache	M720	Onboard 2000 Graphics Controller

Architecture: ISA, EISA, VME

Notes: Processors: 486 support for Pentium Overdrive technology; 586 upgradable to future 586-class processors.  
Standard RAM: Expandable to 136 MB (486-class processors) or 192 MB (586-class processors).  
Standard Cache: Two-way set associative Cache memory.  
Integrated PCI Local Bus Graphics Controller: 1 MB DRAM (256 colours @ 1024 x 768), 1 MB DRAM upgrade option (256 colours @ 1280 x 1024), 2 MB DRAM upgrade option (256 colours @ 1280 x 1024); 2 MB VRAM (256 colours @ 1280 x 1024); 2 MB VRAM upgrade option (16.7M colours @ 1280 x 1024 & VESA Media Channel, VMC, support).  
Onboard 2000<sup>™</sup> Graphics Controller: PCI-based Matrox Local Bus Graphics, 2 MB VRAM (256 colours @ 1280 x 1024); 2 MB VRAM upgrade option (16.7M colours @ 1280 x 1024 & VESA Media Channel, VMC, support).  
M: Model, followed by MB capacity of IDE Hard Disk Drive (all models include high performance PCI-based IDE Controller).  
CDS: Models with internal QuickSpeed CD-ROM Drive & Compaq Business Audio.  
All models: 3.5" 1.44-MB Diskette Drive, Compaq SpaceSaver Keyboard, Compaq Mouse, Plug & Play-ready.

COMPAQ

FLORA LIMITED

Buy from FLORA and associate with 23 years of experience.