

TEENS and TWENTIES

Amphitheatre of JU: An Astonishment

by Anam Mahmud

THE lovely green island called 'Jahangirnagar University,' situated only 32 km away from the capital, has a splendid moment of cultural activities ever since its birth. Much of these credits go to the people who had militarized culture from the front as a way of life. The foundation of amphitheatre in Jahangirnagar University back in 1980 had much to say about the cultural revolution in the University.

Amphitheatre literally means an edifice of a round or an oval form with tiers of seats ranged round it inside. The concept of amphitheatre came from ancient Greek civilisation. But the amphitheatre in JU is not totally circular, rather it is semi-circular in shape which has diversified it

formed at the Amata (near the Arts faculty) with lots of limitations. Firstly, the audience ground proved to provide inadequate rooms for the spectators. Secondly, the atmosphere for performing cultural programmes had an inanity of its own. Thus the students had a long demand for an amphitheatre. The dream came finally true as the construction of the amphitheatre on the campus, had been completed. It was constructed almost in Greek style.

The orientation of the amphitheatre inspired various group theatres to be formed, and had opened a new potential ground for any necessary mobilization. Jahangirnagar theatre first performed drama in 1981 named 'Shakuntala' directed by Setim Al Din

'Souls,' 'Obscure,' 'Feed-Back,' 'Azam Khan,' 'Tapan Chowdhury' had their concerts several times on different occasions. During the concerts they have created jubilation among the spectators. Every artist praised the amphitheatre as saying, 'It had been a wonderful experience to perform here.'

The present director of Jahangirnagar theatre Abdul-ah-Rashed gave more information about the amphitheatre on JU campus.

Talking about the speciality of the amphitheatre in JU he says 'It can provide adequate rooms for the spectators compared to other stages. The amphitheatre was modelled in the Greek style in such a way that the spectators at the last row would have no difficulty in

comprehending the sound. The stage of the amphitheatre is large in size compared to other stages. As a result the new artist finds some difficulties during the show. Still then I would say it is indeed a wonderful experience for the artists to perform here.'

The spectators of the amphitheatre are absolutely splendid, he thinks. Obviously due to various limitations the cultural activities on the campus are limited. So whenever a programme of drama or concert is arranged in the amphitheatre, the students immediately march to the audience ground. With some exceptions the spectators had been always rational during the show. 'There seem to exist a co-operative relationship between the spectators and the performers. I would like to remind that most of the programmes should be arranged at night because in the daytime the students are busy in their classes. Besides the sensation of enjoying programmes in the amphitheatre can only be realised at nights,' he expresses. But often girls of the residential halls face difficulties joining the programmes at night, as they are bound to stay at their rooms after evening. 'On this connection they have to take permission from the hall-Supers. A controversy had been created on this regard between the students and the authorities. This matter should be solved immediately, otherwise it may lose a large number of the spectators in the amphitheatre. I am afraid,' he relates.

Considering the growing number of spectators, the audience space might not be sufficient in few years' time. Then a few stairs at the last row of the audience ground can be increased to meet the growing demand.

The atmosphere inside the dressing room of the amphitheatre is very much unhygienic. The facility of water-supply should be properly ensured. During the off-season some people gather here and make the place dirty. A step should be taken to provide a door in the dressing room. Moreover some reconstructions are required as some of the bricks on the roof of the dressing room are loose which may give way to some serious accidents, he points out.

The only such glamorous thing on the campus and also among the so many drama theatres in and around the city, this particular architecture, which reminds us nostalgically of the romantic Greek civilization, should be properly renovated and promoted.

Diamonds and Ashes, Foes and Friends, All are Equal in the End

by Asrarul Islam Chowdhury

THE two words 'Pink Floyd' ought to right bells in the minds of many people in Bangladesh. Indeed, among various Western groups and artists, Pink Floyd is one group whose music we Bengalees are quite familiar with. However, among the groups of the seventies, Pink Floyd was probably the most enigmatic.

Pink Floyd, the way we know it today with Roger Water at the helm upto the 'Final Cut' album (1983) and then Dave Gilmour trying to reconstruct the group, was not like this in its genesis. The creator of the group was one, Syd Barrett (Roger Keith Barrett). It was upon his genius that Floyd introduced to the world 'Psychedelic' music. Although, psychedelic music was officially introduced by the Beatles in their 'Sgt Pepper's Lonely Hearts Club Band' in the summer of 1967, it was Floyd who later based the theme, mixed with trends of other music luminaries like Mick Jagger and the Stones, Jimi Hendrix, Eric Clapton, et al, to become one of the most prominent psychedelic groups of our era. However, the music they composed was at initial stages known as 'Manufactured Music'. The reason for this allegation is that they did not improvise like Clapton and Hendrix. Their music at the beginning was rather of a cut to cut type.

Most of us sometimes confuse psychedelic music with hallucination. This is rather wrong. This type of music is actually an expression of a myriad of human feelings. However, its depth is immense. Pink Floyd and other groups in this genre try to express human sorrow, pain, frustration, joy, miseries, etc., with their notes just like Van Gogh expressed his feelings with his brush and Pushkin with his ink. The canvass is just different, but the expression is the same.

Back to the past. Pink Floyd was created by Syd Barrett as

reason for this was that Pink Floyd was badly in need of a lead guitarist. Moreover, with Rick Wright on keyboards and Nick Mason on the drums and Water not a fluent guitarist as Barrett, Gilmour's inclusion was just a matter of time as Gilmour had been associated informally with the publication of their first two albums. But the actual problem arose with the question of music composition. Pink Floyd had upto then evolved around the genius of Barrett. There is a saying 'the show must go on'. Water thus started to compose music. This is how Pink Floyd with Roger Water at the helm originated.

After publishing 'Saucerful of Secrets', Floyd started to bring out a series of albums with Water at the helm. The most prominent among them were 'Atom Heart Mother' (1970); 'Umma Gumma' (1971); 'Meddle' (1971); 'Wish You Were Here' (1973); 'Dark Side of the Moon' (1973); 'Animals' (1977); 'The Wall' (1979); 'Final Cut' (1983); 'Momentary Lapse of Reason' (1987); 'Delicate Sound of Thunder' (1989) and 'Division Bell' (1994). Water stayed with the group upto the 'Final Cut' album. After that Gilmour started to reconstruct the group.

The songs that Water wrote were mainly based upon his personal feelings and experiences. This is profoundly noticed in 'The Wall' album. There we see the childhood of a little boy who was bullied in school by his teachers and was sick of the education system in which he got himself entangled in. The little boy wanted

to break the walls around him. 'The Wall' is actually the childhood of Water. He lost his father in the Second World War. Moreover, it was a satiric album which attacked the education system of conservative England and the English Parliament. The Second World War left a deep image in the mind of Water. These images were further noticed in their last group album with Water at the helm 'The Final Cut' which is actually Water's tribute to his father, Fletcher Water. Pink Floyd always protested against the hypocrisy of the society. This was seen in all of their albums, because as we mentioned at the beginning, psychedelic rock 'n' roll is distinct in the sense it is deeper than conventional music both in its composition and lyrical appeal.

A peculiar characteristic of Pink Floyd was that the members of this group did not socialise as members of other bands like 'The Beatles' and 'The Rolling Stones'. They used to meet each other and then make an album. Moreover, Water's arrogance and his will to maintain absolute control over the group, especially in song composition, hastened his departure from the group. Later when Gilmour took hold of the reins and began to make a tour, Water made sure that injunctions were made on the songs he composed. This created a lot of mental pressure, especially on Nick Mason and Rick Wright who later confessed that they started to feel insecure due to Water's arrogance.

Although Pink Floyd always maintained the philosophy that they, were not commercial in

the way that the Beatles and the Rolling Stones were, it maybe interesting to know that songs of their 'The Dark Side of the Moon' are played at some radio station or other throughout the world 24 hours a day. Another song in this line is the immortal 'Stairway to Heaven' of 'The led Zeppelin'.

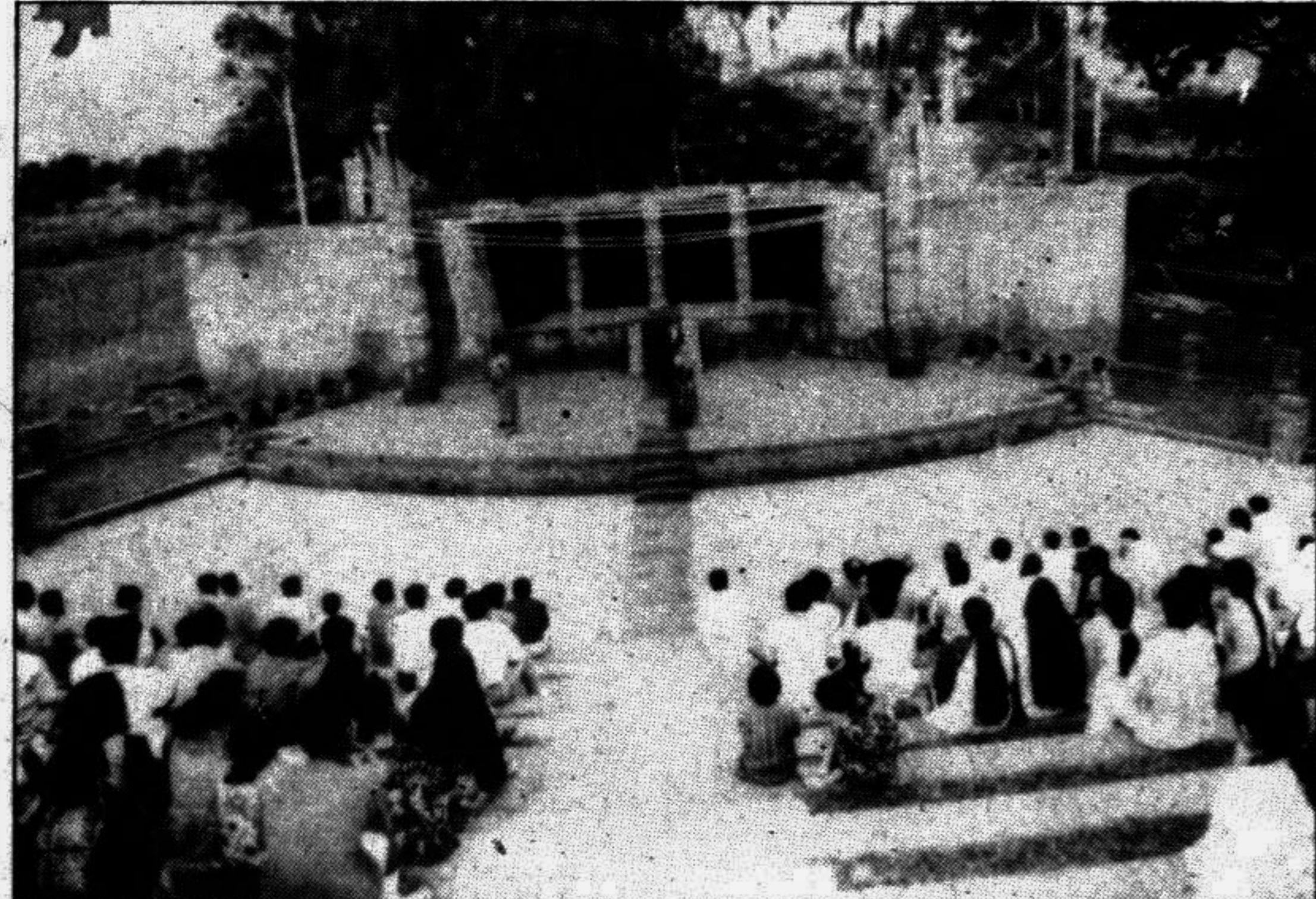
After 'The Final Cut' album, Water and Gilmour fell into a dilemma. Water advocated that Pink Floyd should stop their concerts and concentrate more on their music in the studio. Gilmour however, wanted to play for the folks and earn more money. This resulted in Water leaving the group. Pink Floyd's first album with Gilmour at the helm was 'Momentary Lapse of Reason'.

Pink Floyd actually reached its pinnacle under in the Water era. They were artists in the truest sense. As a solo, Water brought out 'Pros and Cons of Hitch Hiking' (1984); 'When the Wild Blows' (1986) and 'Radio KAOS' (1987). Gilmour's solo albums are 'Debut' (1974) and 'About Face' (1984). Nick Mason's solo albums are 'Fictitious Sports' (1981) and 'Profile' (1985).

Pink Floyd shook the people of their generation. 'We don't need education' was what Water cried out in 'The Wall'. Well maybe if you are smart enough as Water and the Pink Floyd, you will not need formal education, but you will have to educate yourself from the University of life. That is what the members of Pink Floyd did.

Every good thing has to come to an end. Pink Floyd is still here, but it is not the group that once rocked the world. Pink Floyd loved poetry. 'Diamond and Ashes, Foe and Friends, All are equal in the end' is what they professed. Yes that is the destination of all of us, isn't it?

Acknowledgements: The author thanks Tanveer Ahmed Pasha and Rashed Kabir for their key informative discussions.



Amphitheatre in the JU campus

from others. The audience ground has gradually risen like cone leaving the stages behind.

The main stage can be viewed from three angles. It can hold a capacity crowd of almost 3000 students at a time. Central cafeteria of the University stands just beside the amphitheatre where thousands of students gather together before the beginning of any cultural programmes. In its left is a lovely green field which provides spectators enough room when the audience-ground is packed. The students pass some champagne moments enjoying the programmes mostly held at starlit nights. The amphitheatre in JU has succeeded in creating a marvelous figure of culture-lovers.

The plan of constructing an amphitheatre on the campus was a long desired one. Before it was constructed, most of the cultural programmes, concerts, dramas etc were per-

'Bounnar Shakun' by Lakh theatre followed its path immediately.

Later 'Sanskriti Sangsad,' 'Bibortan Sangsad,' 'Krantit Natyagothy' staged various notable dramas. During these periods 'Khela-dhula' of Aranyak, 'Bichchhu' and 'Thuluk' of Natyakendra, 'Dewan Gazir Kichchha' and 'Achalaytan' of Nagarik were performed on this ground. Personalities like Humayun Faridi, Shahiduzzaman Selim, Ally Zaker, Sara Zaker, Asaduzzaman Nur had performed on this stage, almost everybody praised this stage for its speciality.

The amphitheatre has also special appeal for concerts by various band groups. In the dwindling process almost every renowned music groups of the country were invited to perform concert here. The student audience of JU have always been appreciated for their brilliant cooperation.

comprehending the sound. The stage of the amphitheatre is large in size compared to other stages. As a result the new artist finds some difficulties during the show. Still then I would say it is indeed a wonderful experience for the artists to perform here.'

The spectators of the amphitheatre are absolutely splendid, he thinks. Obviously due to various limitations the cultural activities on the campus are limited. So whenever a programme of drama or concert is arranged in the amphitheatre, the students immediately march to the audience ground. With some exceptions the spectators had been always rational during the show. 'There seem to exist a co-operative relationship between the spectators and the performers. I would like to remind that most of the programmes should be arranged at night because in the daytime the students are busy in their classes. Besides the sensation of enjoying programmes in the amphitheatre can only be realised at nights,' he expresses. But often girls of the residential halls face difficulties joining the programmes at night, as they are bound to stay at their rooms after evening. 'On this connection they have to take permission from the hall-Supers. A controversy had been created on this regard between the students and the authorities. This matter should be solved immediately, otherwise it may lose a large number of the spectators in the amphitheatre. I am afraid,' he relates.

Considering the growing number of spectators, the audience space might not be sufficient in few years' time. Then a few stairs at the last row of the audience ground can be increased to meet the growing demand.

The atmosphere inside the dressing room of the amphitheatre is very much unhygienic. The facility of water-supply should be properly ensured. During the off-season some people gather here and make the place dirty. A step should be taken to provide a door in the dressing room. Moreover some reconstructions are required as some of the bricks on the roof of the dressing room are loose which may give way to some serious accidents, he points out.

The only such glamorous thing on the campus and also among the so many drama theatres in and around the city, this particular architecture, which reminds us nostalgically of the romantic Greek civilization, should be properly renovated and promoted.

It's Time for Bird Watching

by Siraj-us-Saleheen Lovell

HEY you bird loving fanatics out there, its winter season again, and that means, a full two months time, for exotic bird-watching and of course to your heart's content. In the past few years these migratory birds that we are talking about have been an excellent addition to our country natural beauty. Thanks to the government for taking steps to preserve these winged beauties. Each year these birds station themselves to specific areas at a certain time, and keep coming back again and again. Among these extremely lucky places, one is

universities Registrar building and the 'Albruni Hall (extension)'. From eight o'clock in the morning to five in the evening you may be lucky enough to watch them, either leisurely sunbathing in the pond, or flocking together in combinations high above and around the campus territory. These winter birds started migrating to the campus seven years ago, in the winter of 1987. At that time nearly ten species of birds numbering from eight to ten thousand visited the campus. But the most interesting factor about these

of visiting birds, which were in abundance just a few years ago. Among these species, there were Lesser Whistling Teals (Choto Shorali), Large Whistling Teals (Bono Shorali), Rudy Shelduck (Chokachoki), Pintail (Lenja Hans), Common Teal (Patari Hans), Bluewinged Teal, Shoveller, Common Pochard, White-eyed Pochard and Cotton Teal. When asked what these birds have for food, the Professor said that their menu is as same as our own birds, which are mainly fish and water-vegetables. He added an interesting information that at night these birds



Welcome! Welcome! Courtesy - JU

the Jahangirnagar University campus. Situated twenty miles away from the crowded capital city, this University campus has been an ideal depot for these lovely birds for the last seven years. Anybody entering the campus just has to walk a few steps and will instantly encounter the most splendid and most exotic scene. Overhead you can hear as well as see a group of birds (mainly wild-ducks) flying in a symmetric manner and chirping all the way. They fly around the campus premises as if they were also residents of this university. Sometimes while watching and admiring such a splendor you may even get a trifle wet from the water-drops that fall from their feathers. Their feathers are wet because they settle down in a pond situated between the

birds is their astonishing journey, to which they cover thousands of kilometres just by instinct arriving at the same time and same place, again returning to their home base. When asked about this amazing journey, Professor Md Anwarul Islam, Department of Zoology, Jahangirnagar University, commented that many experts have many opinions, but it is concluded that the birds assess their route by the help of the sun, the stars, the air-speed and by their smelling power.

Geomagnetism also plays a part here. He also stated that, after a field study conducted several days ago, it was found out that now 90 per cent of them are of the kind named Whistling Teal, better known as Shorali. Professor Islam showed his deep concern about the decrease in species

do not stay in the ponds which are their station for the daytime. But rather move on to nearby haors and beels, or even to nearby forestries.

The most sad but true fact is that, these birds are not being properly conserved as they should be. As a result, day by day their numbers are reducing, which is a very disheartening event. Such visitors are not only an addition to our natural beauty but also a great help in keeping the balance of the precious environment. So being, it is our sole duty to keep a watchful eye on them and take necessary steps to properly preserve them to maintain a sustainable environmental condition. After all, even the poet Jibonanda Das wanted to be reincarnated as a beautiful Shalik bird in this wonderful golden Bangladesh.

Symptoms of Fantasy

by Kazi Khaled Arafat

TAKE me for a lightning ride through supersonic hours With unlimited lives and weapons; unlimited powers. I wanna annihilate some galaxies and resurrect mankind - No-one knows what enemies at each new stage I'll find.

Take me to a prison camp and shut me up in there Make me a foreign war-time spy who's condemned to the chair But I shall still manage to escape And defeat all my foes Cause here I'm invincible and supreme I can suffer no woes. Leave me alone on a desert isle or kidnap the king of the land Don't you worry all the power I need is right here in my hand I may be the Master of Eternity, but as a kid I'm much the same 'Cause I'm everybody's favourite hero only in my video game.

Teen Idol David Cassidy Returns to Serious Theater

DAVID Cassidy is back traveling the serious-theater road he started out on before he became a famous singing heartthrob, then a well-known has-been, who felt like a failure for about a decade, reports AP. He isn't sorry he was once a teen idol. Having a name that's recognized helps in getting parts and bringing in audiences.

Cassidy, now 43, had a leading role in the TV show 'The Partridge Family,' about a singing family, that ran in the United States from 1970 to 1974. 'It has afforded me the opportunity to do the work I'm doing today,' says Cassidy. 'People still know me from that. I think it's a great compliment they still care. There aren't that many roles you're right for physically and that you get cast in. There are way too many actors and not nearly as many good parts.'

Now people in 23 cities will have a chance to see Cassidy play a kid who grows up in Liverpool poverty in Wally Russell's serious musical 'Blood Brothers' on its American tour through May.

Cassidy and his half-brother, Shaun Cassidy, replaced the original Broadway cast's British actors as the Johnstone twins. After 10 months, Cassidy and Petula Clark as Mrs Johnstone left the Broadway cast and started the tour in Dallas on Sept 6. Shaun, also left Broadway, to write and produce movies for TV. The brothers are talking about working together again someday in one of Shaun's projects.

Cassidy also had his autobiography published by Warner Books this summer. 'C'Mon, Get Happy...' is meant to answer the questions he repeatedly is asked about stardom and 'The Partridge Family.'

'Blood Brothers,' Cassidy says, is 'a complete home run on a professional level. As a life experience, it's even better than that.'

'I feel buoyant and optimistic that I get to play this part all through America. People can see me today and my work today.' One critic called him 'a gutsy revelation.'

In 'Blood Brothers,' the Johnstone twins were separated at birth. Mickey raised by his working-class mother, Edward adopted and raised in the upper-middle class.

'This play has that intangible thing that gets to everybody; it's about brothers, family, mother,' Cassidy says. 'There's a lot of layers of emotional stuff going on in this play. I think we in America understand the English have a class system. And I think we all understand how thick blood is.'

'When Mickey's life falls apart, he rips the whole fabric of those families apart. There's a sense of incredible loss. It's such a painful thing for us as humans to watch - if you play it for real. It's for real for me every night.'

How Romantic are You?

Are you in love with being in love?

1. Do you often seem to fall in love?
2. When you are in love does it seem to absorb all your energies and take over your entire life?
3. Do you work better when you are in love?
4. Do you think that being in love is essential for good sex?
5. Do you remember your first kiss?
6. Do you believe in love at first sight?
7. Do you cry at weepy movies?
8. Do you like buying or receiving flowers?
9. Would you enjoy a candle lit dinner for two in a restaurant?
10. Do you carry a photo of your current partner with you?
11. Do you know the color of his/her eyes?
12. Can you remember the date when you first met?
13. Can you remember what you were wearing?
14. Can you remember what he/she was wearing?
15. Do you like being in love?

Now check your score

You get one point for every 'yes' answer and no points for every 'no' answer.

If you scored 9 or more, then you are a real old-fashioned romantic. Love plays an important part in your life.

If you scored between 4 and 8, then although love does play a part in your life it isn't a desperately important part. You aren't one of the world's great romantics.

If you scored 3 or less, then you aren't really very romantic at all. You probably buy your partner useful presents and instead of blowing money on dinner and champagnes probably prefer to celebrate anniversaries and other occasions by buying a nest of coffee tables or a set of nonstick pans.

Fill out this form and send it to us, and you will be a member of Teens in Twenties club. Send in your writings, illustrations and cartoons. It is an ideal opportunity to express yourself through the print media.

Name: _____ Age: _____
University: _____ Subject: _____
College: _____
Full address: _____
Telephone No: _____