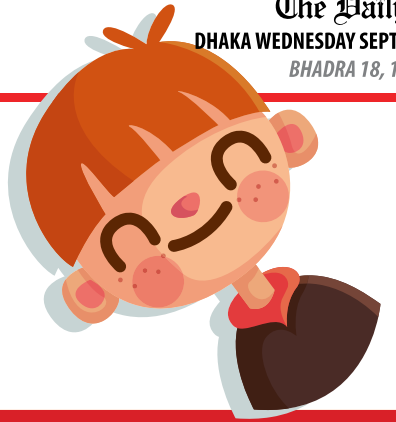




HSC SPECIAL MODEL TEST 2020

SUBJECT: ENGLISH FIRST PAPER

Md. Jasim Uddin Biswas, Lecturer, Department of English, Dhaka Residential Model College, Dhaka



SEEN PASSAGE



Read the passage and answer the following questions.

Bangladesh is blessed with huge inland open water resources. It has numerous river canals, beels, lakes, and vast areas of floodplains. Hakaluki Haor is one of the major wetlands of Bangladesh. With a land area of 18,386 hectares, it supports a rich biodiversity and provides direct and indirect livelihood benefits to nearly 190,000 people. This haor was declared an Ecologically Critical Area in April 1999 by the Government of Bangladesh.

Hakaluki is a complex ecosystem, containing more than 238 interconnecting beels and jalmahals. The most important beels are Chatla, Pinlarkona, Dulla, Sakua, Barajalla, Balijhuri,

Lamba, Tekonia, Haorkhal, Tural, Baghalkuri and Chinaura.

Hakaluki Haor is bounded by the Kushiara river as well as a part of the Sonai-Bardal river to the north, by the Fenchuganj-Kulaura railway to the west and to south, and by the Kulaura-Beanibazar road to the east. The haor falls under two administrative districts, Maulvibazar and Sylhet. Some 190,000 people live in the area surrounding the haor.

Hakaluki Haor is an important source of fisheries resources for Bangladesh. Kalibaas, Boal, Rui, Ghagot, Pabda and Chapila are the main fish species found here. From the Kushiara there are

frequent upstream movements of fish towards the beels and tributaries of Hakaluki. The beels in Hakaluki Haor provide winter shelter for the mother fisheries. In early monsoon these mother fisheries produce millions of fries for the entire downstream fishing communities. Floodplains are also an important source of fisheries resources within the area. However, many of the beels have lost their capacity to provide shelter for mother fisheries because of sand deposits from upstream rivers and canals, use of complete dewatering technique for fishing and lack of aquatic plants to provide feed and shelter for parent fish.

1. A. Choose the correct answer from the alternatives.

1×5=5

- What is Bangladesh blessed with?
 - fertile land
 - biggest mangrove garden
 - huge inland water resources
 - natural beauty
- What does the word 'ecosystem' in the passage mean?
 - complex web
 - ecological community
 - atmosphere
 - ecological balance
- 'Technique' means _____.
 - cultivation
 - skill
 - siltation
 - method
- "Bangladesh is blessed with" refers to _____.
 - Bangladesh is a blessing.
 - Bangladesh is lucky to have.
 - Bangladesh is beset with.
 - Bangladesh is a beauty.
- "Livelihood" in line 4 could be best replaced by _____.
 - way of life
 - source of life
 - stage after adulthood
 - source of income



B. Answer the following questions.

2×5=10

- Why is Hakaluki Haor a vital source of fisheries?
- What is wetland? Can you name some wetlands of Bangladesh?
- What do mother fisheries produce?
- Why is Hakaluki Haor called a complex ecosystem?
- What is the economic importance of the Hakaluki Haor?



2. Read the following text and make a flow chart showing the events of Anne's life. (One is done for you.)

2×5=10

Anne Frank is perhaps the most well-known victim of the Nazi Holocaust of World War II. Anne, born on 12 June 1929, was given a diary at the age of 13, in which she chronicled her life from 1942 to 1944. During this time, Anne spent two years in hiding with

her family in Nazi-occupied Amsterdam in a secret annex with four other Jews. Betrayed and discovered in 1944, Anne was sent to the Bergen-Belsen concentration camp, where she died of typhus in 1945. Anne's father, Otto Frank, was the only

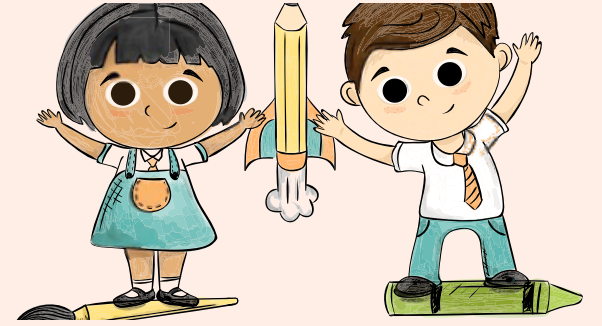
occupant of the secret annex to survive the war. In 1947, he published Anne's diary as The Diary of a Young Girl. Anne's account of her internment, as well as her deep belief in humanity has become one of the world's most widely read books.

1. Born in 1929 → 2 → 3 → 4 → 5 → 6

ANSWERS

Answer to the question number 1(A):

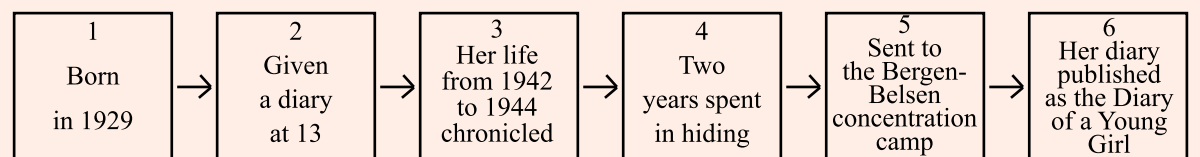
- ⇒ (iii) huge inland water resources
- ⇒ (iii) atmosphere
- ⇒ (iv) method
- ⇒ (ii) Bangladesh is lucky to have
- ⇒ (iv) source of income



Answer to the question number 1(B):

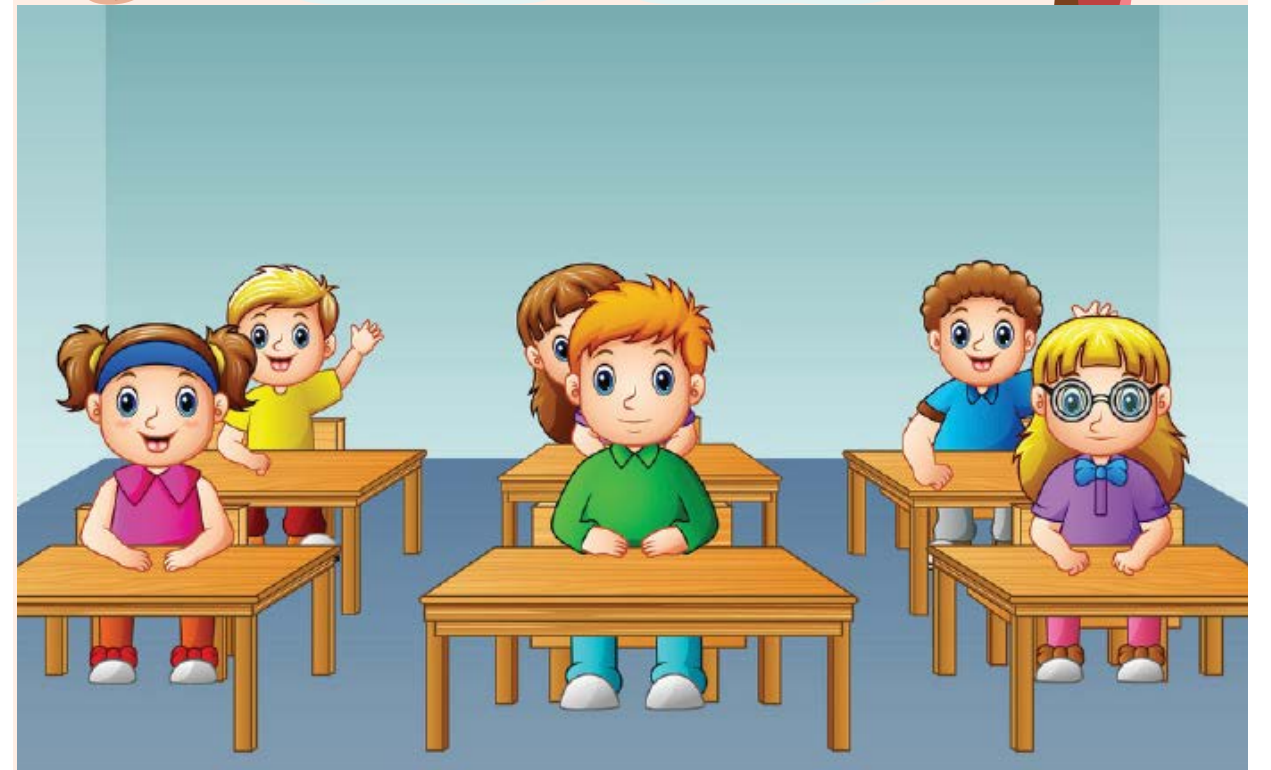
- Hakaluki Haor, covering an area of 18,386 hectares is one of the major wetlands of Bangladesh. It is a complex ecosystem containing more than 238 interconnecting beels and jalmahals. It is an important source of fisheries resources of Bangladesh. Various types of fish like Kalibaas, Boal, Rui, Ghagot, Pabda and Chapila are available here.
- A wetland is an area of land that is partly covered with water, or is wet most of the time. The Hakaluki Haor, Chalta, Pinlarkona, Dulla, Sakua, Lamba, Tekonia, Haorkhal, Chalan Beel, Beel Dakatia, etc. are some of the major wetlands of Bangladesh.
- Mother fisheries produce millions of fries for the downstream fishing communities.
- Hakaluki Haor is called a complex ecosystem because it holds more than 238 interconnecting beels and jalmahals like Chatla, Pinlarkona, Dulla, Sakua, Barajalla, Balijhuri, Lamba, Tekonia, Haorkhal, Tural, Baghalkuri and Chinaura. Its functions are complex and it is directly connected to the livelihood of around 190,000 people.
- The Hakaluki Haor provides a wide range of economic and non-economic benefits to the local people as well as to the people of Bangladesh. It contributes a lot to the economy of our country through fish production, rice production, cattle and buffalo rearing, duck rearing, collection of reeds and grasses, and collection of aquatic and other plants.

Answer to the question number 2:



Answer to the question number 3:

- Garment industry in Bangladesh is one of the major sources of earning foreign currency. But this sector is afflicted with many problems.
- Once Taimur attacked the province of a powerful prince. When the prince heard the news, he came with a large army.
- Mr. Karim is a hard-working man. In spite of working hard, he cannot turn the wheels of his fortune.
- Success does not come to a man automatically. When a man works in a systematic way, he can turn the wheels of his fortune.
- Female education is a crying need for our country. It is a good sign that nowadays the people of our country give emphasis to the education of female children.
- I shall stay here until the storm stops. I do not want to take any risk.
- The shoes were so expensive that I could not buy them. I did not have sufficient money with me.
- Her voice was too low for the people at the back to hear clearly. The organizers should have arranged sound system.
- London was a new city for us. We hired a bus so that we could visit the interesting places of the city.
- As I've already completed my studies, I have to manage a job/ I have to try to get a good job. I need money.



EXCLUSIVE MODEL TEST 2020 ON ENGLISH SECOND PAPER

Part A: Grammar

3. Complete the sentences using suitable clauses/phrases.

.5×10=5

- Garment industry in Bangladesh is one of the major sources _____. But this sector is afflicted with many problems. (b) Once Taimur attacked the province of a powerful prince. When the prince heard the news, _____.
- Mr. Karim is a hard-working man. _____ he cannot turn the wheels of his fortune. (d) Success does not come to a man automatically. When a man works in a systematic way, _____.
- Female education is a crying need for our country. It is a good sign that nowadays _____, (f) I shall stay here until _____. I do not want to take any risk. (g) The shoes were so expensive that _____. I did not have sufficient money with me. (h) Her voice was too low for the people at the back to _____. The organizers should have arranged sound system. (i) London was a new city for us. We hired a bus so that _____. (j) As I've already completed my studies, _____ I need money.