

Exhibition

Cascading colours and impeccable lines

Saju Gallery's annual exhibit at Gulshan

FAYZA HAQ

THE annual exhibition at Saju's gallery had brought together 160 works by 105 artists, many of whom were only too well-known to the Dhaka art lovers.

There was Zainul Abedin's well-known "Bride with a mirror" where one saw the woman wearing a sari flecked with orange and brown and outlined with yellow and brown.

In S M Sultan's "Toilet", in water colour, we saw two muscular women sitting on a low wooden "piri", one combing the other's hair.

soothing and highly imaginative. Rafiqun Nabi's "The flower vase" in water colour brought in the flowers in circular forms in gray, with centres of blue or orange, touched with streaks or dots.

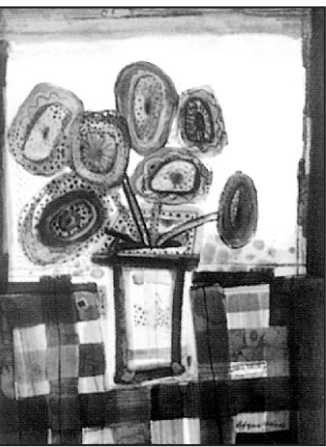
and curls of roots that spread out in different directions with little dots on top with a background of white. Monirul Islam's creations had a lot of blue and gray with lines, rectangles and triangles sweeping through the open space, along with smaller forms in yellow, blue and red.



S.M. Sultan



Shilpacharya Zainul Abedin



Rafiqun Nabi

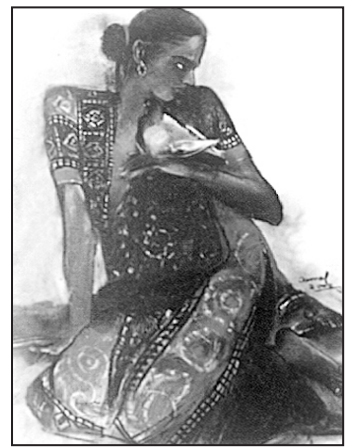
tom. In Kazi Abdul Baset's "Madonna" one saw a dark woman in a matted red sari with a yellow blouse, carrying a brown fan with a red edge.

vibrant colours. Hashem Khan's "Winter Night" (oil on canvas) brought in splashes of black and blue on top of which were lines of orange and red.

In Rashid Chowdhury's entry we saw diminutive figures blending with the flag of Bangladesh done in shades of black, gray and white.



Quamrul Hasan



Jamal Ahmed

Kalidas's creations. In K M Qayyum's Nature-1" we saw flowers in white where the petals were done in details. There were more flower bunches in the back in orange while the leaves appeared to have been worked upon, just as in the case of the petals, and these were basically green, touched with white and brown, black and gray.

Sheikh Afzal's oil colour, "Tania-2" brought in a young female child with "shalwar-kameez", bangles on her wrists, gold beads on her neck, with fish floating at her feet and large butterflies fluttering about.

Ahmed (in mixed media) presented a bronzed beauty, which was typical of Jamal's creations, with

detailed work in the sari in black, gray and red, with delicate touches of vermilion on her hair and lips. She held a gray white pigeon on her hand with red beaks. The background had been sweeps of gray and white.

Abdur Razzaque's "Great Falls" in water colour brought in a lot of green with the streaks of sky on top and then the waterfall, where the tops of the cliffs had been done in sketches of black, while the water itself was in splashes of grays, beige and white.

Saju's gallery was stacked with paintings by well-known artists like Shahabuddin, Syed Jahangir, Murtaja Baseer and Mohammed Eunos so that one got a feast of styles and subjects, apart from forms, colours and lines.

TV GUIDE

Table with TV channel listings for BTV, HBO, and CHANNEL-i, including program names and times.

Table with TV channel listings for SONY and AXN, including program names and times.

Table with TV channel listings for NATIONAL GEOGRAPHIC, STAR GOLD, STAR PLUS, and STAR MOVIES, including program names and times.

Table with TV channel listings for STAR MOVIES, STAR GOLD, STAR PLUS, and STAR MOVIES, including program names and times.

Table with TV channel listings for PICK OF THE DAY, LOSER, and STAR WORLD, including program names and times.

Table with TV channel listings for STAR MOVIES, STAR GOLD, STAR PLUS, and STAR MOVIES, including program names and times.

Table with TV channel listings for HALLMARK, ZEE TV, and ALPHA TV, including program names and times.

Table with TV channel listings for ZEE CINEMA, ZEE MUSIC, and ALPHA TV, including program names and times.